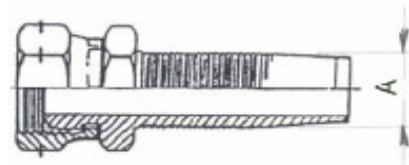
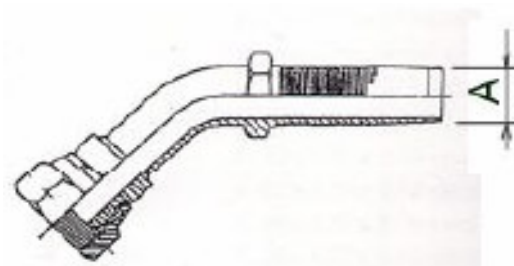


POVRATNI PRIKLJUČCI "ZEC" ZA VISOKOTLAČNE GUMENE I TERMOPLASTIČNE CIJEVI

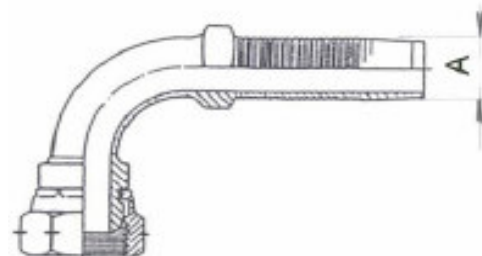
TIP	OZNAKA	STANDARD
A M	DKM	-
A M10x1 - NP 5 R		
A M12x1,5 - NP 6 R		
A M14x1,5 - NP 6 R		
A M16x1,5 - NP 6 R		
A M16x1,5 - NP 8 R		
A M16x1,5 - NP 10 R		
A M18x1,5 - NP 8 R		
A M18x1,5 - NP 10 R		
A M22x1,5 - NP 10 R		
A M22x1,5 - NP 13 R		
A M26x1,5 - NP 16 R		



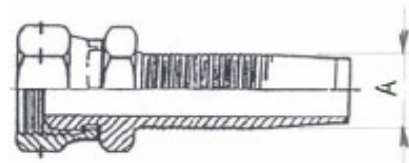
A M L45	DKM - 45	-
A M10x1 L45 NP 5 R		
A M12x1,5 L45 NP 6 R		
A M14x1,5 L45 NP 6 R		
A M16x1,5 L45 NP 8 R		
A M16x1,5 L45 NP 10 R		
A M18x1,5 L45 NP 10 R		
A M22x1,5 L45 NP 10 R		
A M22x1,5 L45 NP 13 R		
A M26x1,5 L45 NP 16 R		



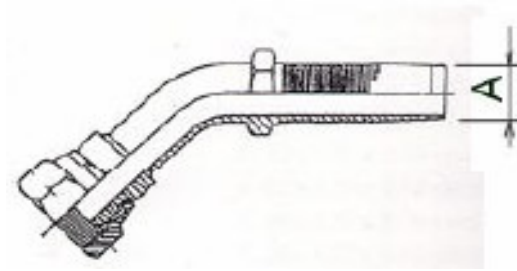
A M L90	DKM - 90	-
A M10x1 L90 NP 5 R		
A M12x1,5 L90 NP 6 R		
A M14x1,5 L90 NP 6 R		
A M16x1,5 L90 NP 8 R		
A M16x1,5 L90 NP 10 R		
A M18x1,5 L90 NP 10 R		
A M22x1,5 L90 NP 10 R		
A M22x1,5 L90 NP 13 R		
A M26x1,5 L90 NP 16 R		



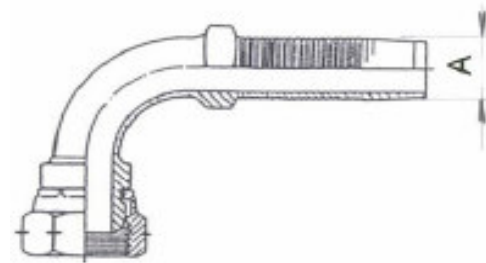
A R	DKR	-
A R 1/8" - NP 5 R		
A R 1/4" - NP 5 R		
A R 1/4" - NP 6 R		
A R 3/8" - NP 6 R		
A R 3/8" - NP 8 R		
A R 3/8" - NP 10 R		
A R 1/2" - NP 10 R		
A R 1/2" - NP 13 R		
A R 5/8" - NP 13 R		
A R 5/8" - NP 16 R		
A R 3/4" - NP 16 R		
A R 3/4" - NP 19 R		
A R 1" - NP 25 R		
A R 1.1/4" - NP 32 R		
A R 1.1/2" - NP 38 R		



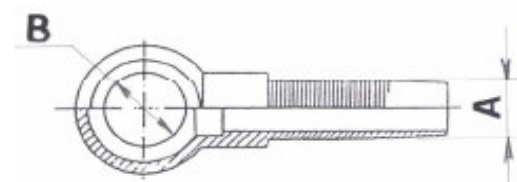
A R L45	DKR - 45	-
A R 1/8" L45 NP 5 R		
A R 1/4" L45 NP 5 R		
A R 1/4" L45 NP 6 R		
A R 3/8" L45 NP 8 R		
A R 3/8" L45 NP 10 R		
A R 1/2" L45 NP 10 R		
A R 1/2" L45 NP 13 R		
A R 5/8" L45 NP 16 R		
A R 3/4" L45 NP 16 R		
A R 3/4" L45 NP 19 R		
A R1" L45 NP 19 R		
A R1" L45 NP 25 R		
A R1.1/4" L45 NP 32 R		
A R1.1/2" L45 NP 38 R		



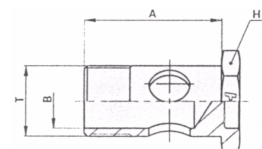
A R L90	DKR - 90	-
A R 1/8" L90 NP 5 R		
A R 1/4" L90 NP 5 R		
A R 1/4" L90 NP 6 R		
A R 3/8" L90 NP 6 R		
A R 3/8" L90 NP 8 R		
A R 3/8" L90 NP 10 R		
A R 1/2" L90 NP 10 R		
A R 1/2" L90 NP 13 R		
A R 5/8" L90 NP 16 R		
A R 3/4" L90 NP 16 R		
A R 3/4" L90 NP 19 R		
A R1" L90 NP 19 R		
A R1" L90 NP 25 R		
A R1.1/4" L90 NP 32 R		
A R1.1/2" L90 NP 38 R		



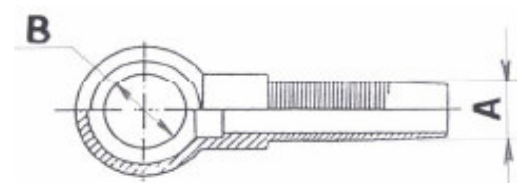
B (M)	RNM	DIN 7642
B 10 - NP 5 R		
B 10 - NP 6 R		
B 12 - NP 6 R		
B 14 - NP 6 R		
B 16 - NP 8 R		
B 18 - NP 8 R		
B 18 - NP 10 R		
B 18 - NP 13 R		



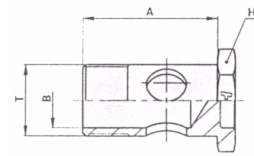
Šuplji vijak M	BFM	DIN 7643
Šuplji vijak M10x1		
Šuplji vijak M12x1,5		
Šuplji vijak M14x1,5		
Šuplji vijak M16x1,5		
Šuplji vijak M18x1,5		



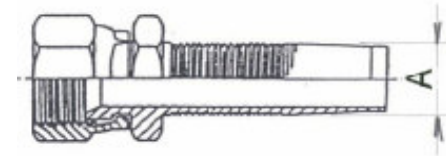
B (R)	RNR	-
B 1/8" - NP 5 R		
B 1/4" - NP 5 R		
B 1/4" - NP 6 R		
B 3/8" - NP 6 R		
B 3/8" - NP 8 R		
B 3/8" - NP 10 R		
B 1/2" - NP 10 R		
B 1/2" - NP 13 R		
B 3/4" - NP 16 R		
B 3/4" - NP 19 R		



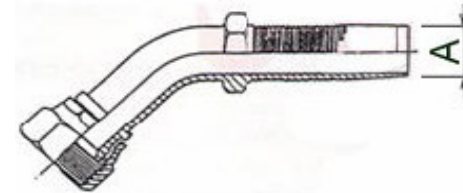
Šuplji vijak R	BFG	-
Šuplji vijak R1/8"		
Šuplji vijak R1/4"		
Šuplji vijak R3/8"		
Šuplji vijak R1/2"		



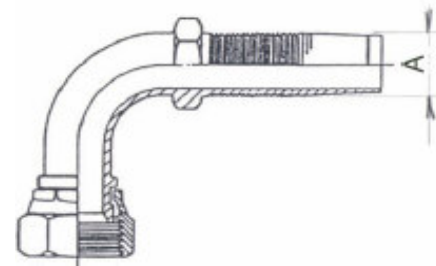
D UNF	DKJ (JIC)	SAE J514
D UNF 7/16" - NP 5 R		
D UNF 7/16" - NP 6 R		
D UNF 1/ 2" - NP 6 R		
D UNF 9/16" - NP 6 R		
D UNF 9/16" - NP 8 R		
D UNF 9/16" - NP 10 R		
D UNF 3/ 4" - NP 10 R		
D UNF 3/ 4" - NP 13 R		
D UNF 7/ 8" - NP 13 R		
D UNF 7/ 8" - NP 16 R		
D UNF1.1/16" - NP 16 R		
D UNF1.1/16" - NP 19 R		
D UNF1.5/16" - NP 25 R		



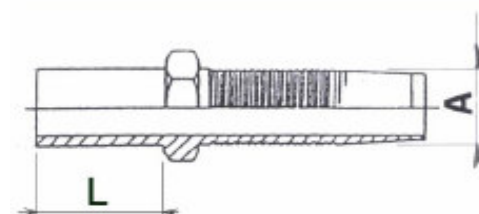
D UNF L45	DKJ - 45 (JIC)	SAE J514
D UNF 7/16" L45 NP 5 R		
D UNF 7/16" L45 NP 6 R		
D UNF 1/ 2" L45 NP 6 R		
D UNF 9/16" L45 NP 6 R		
D UNF 9/16" L45 NP 8 R		
D UNF 3/ 4" L45 NP 10 R		
D UNF 7/ 8" L45 NP 13 R		
D UNF1.1/16" L45 NP 16 R		
D UNF1.1/16" L45 NP 19 R		
D UNF1.5/16" L45 NP 25 R		



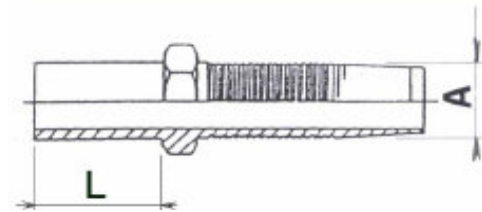
D UNF L90	DKJ - 90 (JIC)	SAE J514
D UNF 7/16" L90 NP 5 R		
D UNF 7/16" L90 NP 6 R		
D UNF 1/ 2" L90 NP 6 R		
D UNF 9/16" L90 NP 6 R		
D UNF 9/16" L90 NP 8 R		
D UNF 9/16" L90 NP 10 R		
D UNF 3/ 4" L90 NP 10 R		
D UNF 3/ 4" L90 NP 13 R		
D UNF 7/ 8" L90 NP 13 R		
D UNF1.1/16" L90 NP 16 R		
D UNF1.1/16" L90 NP 19 R		
D UNF1.5/16" L90 NP 25 R		



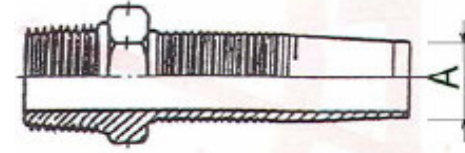
F1	BEL	DIN 2353
F1 6 - NP 6 R	BEL 6 - L	
F1 8 - NP 6 R	BEL 6 - L	
F1 10 - NP 8 R	BEL 10 - L	
F1 12 - NP 10 R	BEL 12 - L	
F1 15 - NP 10 R	BEL 15 - L	
F1 15 - NP 13 R	BEL 15 - L	
F1 18 - NP 13 R	BEL 15 - L	
F1 18 - NP 16 R	BEL 18 - L	
F1 22 - NP 19 R	BEL 22 - L	
F1 28 - NP 25 R	BEL 28 - L	



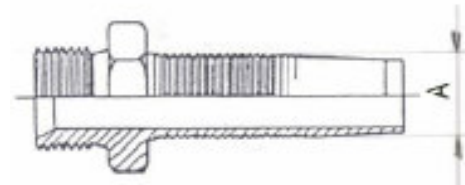
F2	BES	DIN 2353
F2 6 - NP 5 R	BEL 6 - S	
F2 10 - NP 6 R	BEL 10 - S	
F2 12 - NP 8 R	BEL 12 - S	
F2 14 - NP 10 R	BEL 14 - S	
F2 16 - NP 13 R	BEL 16 - S	
F2 20 - NP 16 R	BEL 20 - S	
F2 25 - NP 19 R	BEL 25 - S	



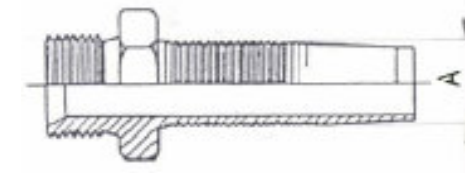
G NPT	AGN	SAE J516
G NPT 1/4" - NP 6		
G NPT 3/8" - NP 10		
G NPT 1/2" - NP 10		
G NPT 1/2" - NP 13		
G NPT 3/4" - NP 16		
G NPT 3/4" - NP 19		



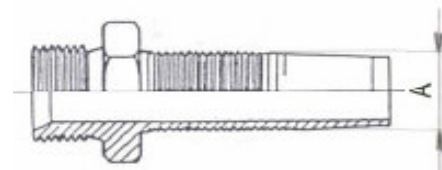
H M	AGM	-
H M10x1 - NP 5 R		
H M14x1,5 - NP 6 R		
H M16x1,5 - NP 8 R		
H M16x1,5 - NP 10 R		
H M18x1,5 - NP 10 R		
H M22x1,5 - NP 13 R		
H M26x1,5 - NP 16 R		



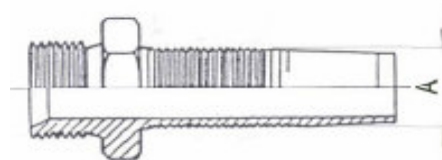
H R	AGR	-
H R 1/8" - NP 5 R		
H R 1/4" - NP 6 R		
H R 3/8" - NP 6 R		
H R 3/8" - NP 8 R		
H R 3/8" - NP 10 R		
H R 1/2" - NP 10 R		
H R 1/2" - NP 13 R		
H R 5/8" - NP 16 R		
H R 3/4" - NP 16 R		
H R 3/4" - NP 19 R		
H R 1" - NP 19 R		
H R 1" - NP 25 R		



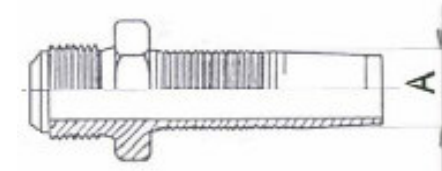
J1 M	CEL	DIN 3853
J1 M14x1,5 - NP 6 R		
J1 M16x1,5 - NP 8 R		
J1 M18x1,5 - NP 10 R		
J1 M22x1,5 - NP 13 R		



J2 M	CES	DIN 3853
J2 M18x1,5 - NP 6 R		
J2 M22x1,5 - NP 10 R		
J2 M24x1,5 - NP 13 R		



K UNF	AGJ (JIC)	SAE J514
K UNF 1/2" - NP 6 R		
K UNF 9/16" - NP 8 R		
K UNF 3/4" - NP 10		
K UNF 7/8" - NP 13		



Napomena: Ovi se priključci isporučuju isključivo uz povratne čahure "ZEC" za visokotlačne cijevi.